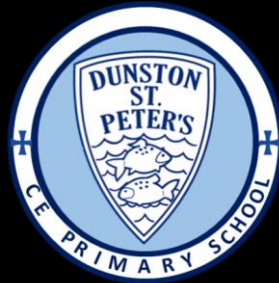


---

# SPIRES FEDERATION



To provide an aspirational education which inspires all to SHINE in our community so that they are happy, confident and equipped for life in all its fullness.



OPENING  
DOORS



OPENING  
MINDS

---

# SENIOR LEADERSHIP TEAM



**Miss D Winters**  
**Executive Head**  
**Teacher**



**Mrs E Toulson**  
**Executive Deputy**  
**Head**



**Miss N Vaughan**  
**Senior Federation**  
**Lead and SENDCo**

# WELCOME TO TERM 1

## Welcome to Our First Newsletter of the Year!

We're delighted to welcome everyone back after the summer break. It's been wonderful to see the children return with such positivity—smiling faces, calm attitudes, and a real sense of excitement for the year ahead. Our new Reception pupils have especially impressed us with their independence and cheerful energy as they settle into school life.

Over the summer, our dedicated staff worked incredibly hard to prepare the learning environments across all three schools. The results are fantastic! We've had several visitors to the Federation recently, and they've been full of praise—not only for how vibrant and welcoming our schools look, but also for the excellent behaviour and attitudes of our pupils. It's a credit to everyone involved.

This term promises to be full of exciting opportunities and adventures, and we're looking forward to sharing them with you. Please keep an eye on the Dates for Your Diary section and look out for updates via Arbor, which will include important information and reminders.

We hope you all have a wonderful half term.

Kind regards,

**Senior Leadership Team**

---





---

# PIXIES

What a phenomenal start we have had, everyone has settled and is loving their start of their learning journey in Pixies! Reception have been diving straight into learning 'All About Me' and have excelled in their phonics and drawing club! Well done! We cannot express how much we have LOVED forest school, every session is a different adventure, thank you Mrs. Bond!



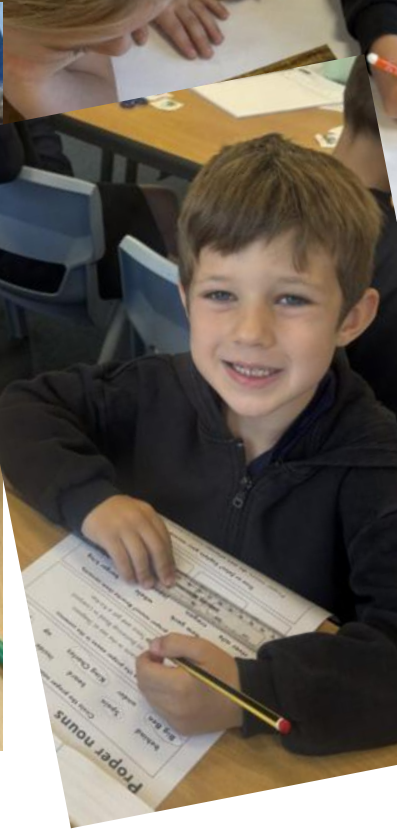
Key Stage 1 have been busy learning about our local area in our Geography topic and have done some fantastic map making. We started our English punctuation and grammar module, and we are super excited to start writing our own texts next term! We have particularly loved creating our Pop Art this term, what a talented bunch we have! To top it all off, our visit into the planetarium was just magical! A superb start to a guaranteed exciting year. Well done everyone!

---



---

# PIXIES





---

# FOREST SCHOOL

This term, the children have really enjoyed the freedom at Forest School. The tyre swing has been very popular, the arts and crafts area is always busy, lots of the children have enjoyed building conker runs with the pipes, and the books and singing are a lovely opportunity to come back together as a group at the end of our afternoon. What's the time Mr Wolf has become a favourite game of ours to play and the hammock is the best for a spot of relaxation.

The children have learnt how to use simple tools safely and have understood our fire circle rules, which has meant that we've been able to light the campfire and enjoy warm drinks. It's lovely that we go out each week with pre-school and share the fun.

---

# GNOMES

What a fantastic start to the new academic year in Gnomes!

We have just come to the end of our block of swimming lessons, and the children have all really impressed us with how much their confidence has grown in the water.

We have also enjoyed learning all about the countries of Scandinavia as part of our geography topic this term and even pretended to be weather reporters for the afternoon.

In science, we have had fun carrying out different experiments into the properties of solids, liquids and gases. The photo opposite is our demonstration of the particles in a solid.

---





---

# IMPS



We've taken part in a wide range of exciting sporting events, including the Year 6s attending a multi-sport festival, a thrilling Lacrosse WOW Day, and a girls' football match against Dunston. We also had a great time completing our Bikeability training — it was both fun and rewarding!

In the classroom, we've loved learning about Scandinavia, Space, and Impressionism across our different subjects. We also celebrated Harvest Festival with some brilliant singing, and many of us have enjoyed taking part in Board Games Club, where we've shown off our skills, battled, and traded Pokémon cards with friends.

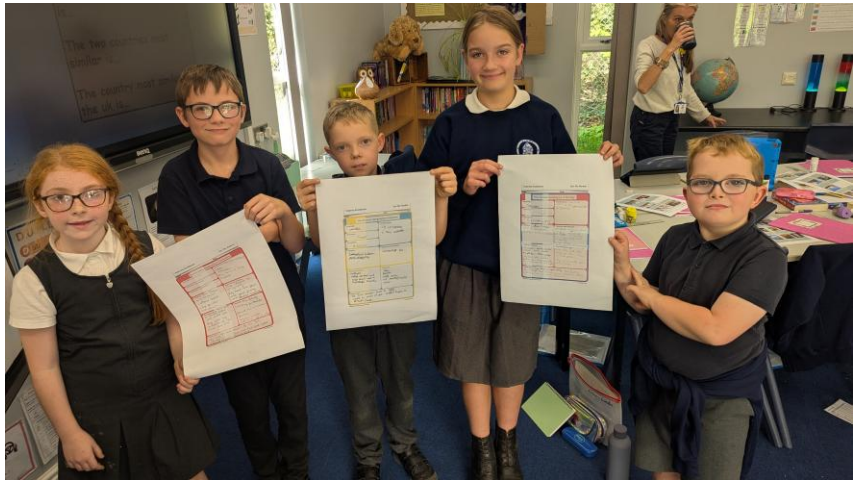
---





---

# IMPS



At The Spires Federation, we are committed to ensuring that every child receives the support they need to thrive. Our approach to Special Educational Needs and Disabilities (SEND) is inclusive, proactive, and continually evolving to meet the needs of our pupils and their families.

We understand that navigating SEND support can be overwhelming, which is why we've created a dedicated Padlet resource for parents and carers. This Padlet is regularly updated with useful links, guidance, local services, and practical tools tailored to a wide range of SEND needs—from autism and ADHD to speech and language support.

Whether you're looking for advice or professional contacts, the Padlet is designed to be a one-stop hub for SEND support. We encourage all families to explore it and check back often as new resources are added.

 **Visit the SEND Padlet here:** [SEND at the Spires Federation](#)

If you have any questions or need help navigating the Padlet, please don't hesitate to reach out to your child's class teacher/SENDCo or contact the Family Information Service listed on the Padlet.

Together, we can ensure every child feels supported, understood, and empowered

---

# SEND INFORMATION



# NEW ADVICE GUIDANCE FROM THE COMMUNITY PAEDIATRICIANS



# Ideas of where to get further support...

## In Our Place

You can access some great online learning (understand your child's feelings, understand your child with additional needs, understanding your children mental health and wellbeing) through In Our Place:

<https://inourplace.heiapply.com/online-learning/courses>

All you will need to do is put in the password WE\_CAN and put in your Lincolnshire postcode and you will be able to access a wealth of support!

## ESCO

ESCO (Early Support Coordination) offer virtual drop in appointments via the phone where you can discuss support and services that are available.

Ring 01522 782111 and say that you want to book a drop in session with an ESCO Key Worker.

## Lincolnshire Local Offer

The Lincolnshire Local Offer brings together information for children and young people with special educational needs and disabilities and their families.

<https://www.lincolnshire.gov.uk/send-local-offer>

## Liaise

Liaise is Lincolnshire's Special Educational Needs and Disability Information, Advice and Support Service (SENDIASS).

They provide confidential and impartial information, advice and support to children and young people (0-25 years) with SEN and disabilities, and their parents and carers.

<https://www.lincolnshire.gov.uk/liaise>

## Virtual Autism Hub

<https://www.lpft.nhs.uk/our-services/virtual-autism-hub>

## PAACT

Parents and Autistic Children Together are a friendly and informal group based in Gainsborough and Lincoln.

<https://paactsupport.com/>

## Useful Websites

### Autism

<https://www.autism.org.uk/advice-and-guidance/what-is-autism>

### Behaviour

<https://www.family-action.org.uk/family-monsters/support/challenging-behaviour/>

<https://behavioursupporthub.org.uk/>

<https://www.123magic.com/parenting-tips/what-is-123-magic.html>

<https://www.youngminds.org.uk/parent/parents-a-z-mental-health-guide/challenging-behaviour/>

### ADHD

<https://adhduk.co.uk/>

<https://www.adhdfoundation.org.uk/>

### Mental health

<https://parentingsmart.place2be.org.uk/>

### Sleep

<https://thesleepcharity.org.uk/>

<https://podcasters.spotify.com/pod/show/lpft-nhs/episodes/MHST-Top-tips-on-getting-extra-Zzzz-et79fn/a-a50tdbi>

<https://thesleepcharity.org.uk/information-support/children/childrens-sleep-ebook/>

Lincolnshire Parent Carer Forum

<https://www.lincspcf.org.uk/>

Autism East Midlands Hub

<https://www.autismeastmidlands.org.uk/>

Family Hubs

<https://www.lincolnshire.gov.uk/directory-record/62596/gainsborough-market-arcade-children-s-centre-part-of-the-family-hubs-programme>

Here 4 You

<https://www.lpft.nhs.uk/young-people/lincolnshire/young-people/self-referral>

As children grow and learn, their ability to see and hear clearly plays a vital role in their development—both academically and socially. That’s why regular **eye and hearing tests** are so important, even if your child hasn’t shown any obvious signs of difficulty.

### **Eye Tests: More Than Just Vision**

Children may not always realise they’re struggling to see clearly. Poor vision can affect:

- Reading and writing
- Concentration in class
- Confidence and behaviour

Routine eye tests can detect issues like short-sightedness, long-sightedness, or even more subtle conditions that might impact learning. These tests are quick, painless, and often available for free through the NHS.

### **Hearing Tests: Catching the Quiet Clues**

Hearing problems can be harder to spot, especially if they’re mild or intermittent. But even slight hearing loss can lead to:

- Speech and language delays
- Difficulty following instructions
- Social withdrawal or frustration

Early detection through hearing tests can lead to simple interventions that make a big difference—whether it’s temporary treatment for glue ear or support for longer-term hearing needs.

Specsavers offer free eye tests to children under 16 in full-time education. Book your here - [https://www.specsavers.co.uk/free-eye-test?srsId=AfmBOopdYa\\_fNESrPgXQ38XPfG6ZGvNirpH1zdy3AGxoGiJSPmVPf1TZ](https://www.specsavers.co.uk/free-eye-test?srsId=AfmBOopdYa_fNESrPgXQ38XPfG6ZGvNirpH1zdy3AGxoGiJSPmVPf1TZ)

---

# EYE TESTS AND HEARING TESTS

### **What You Can Do**

Book regular eye and hearing checks, especially before your child starts school or moves into a new year group.

Watch for signs like squinting, frequent ear infections, or difficulty understanding speech.

Talk to your GP or school nurse if you have any concerns.

Let’s work together to give every child the best start in life—by making sure they can see and hear the world around them clearly.

# VACANCIES

---

## WE ARE RECRUITING!

WE HAVE THREE POSITIONS AVAILABLE AT NOCTON COMMUNITY PRIMARY WONDERFUL SCHOOL.

- 1:1 TEACHING ASSISTANT (5 DAYS)
- EYFS TEACHING ASSISTANT (THURS & FRI)
- MIDDAY SUPERVISOR ROLE (MON & FRI)

For more information please visit our website -

<https://www.spiresfederation.co.uk/page/?title=Vacancies...>

OR

[EARLY YEARS TEACHING ASSISTANT \(LEVEL 3\) | 03 NOVEMBER, 2025 | JOBS AND CAREERS WITH LINCOLNSHIRE COUNTY COUNCIL](#)

[1:1 TEACHING ASSISTANT LEVEL 1 \(SEN\) | 02 NOVEMBER, 2025 | JOBS AND CAREERS WITH LINCOLNSHIRE COUNTY COUNCIL](#)

---



---

# ADMINISTRATION TEAM



**Mrs T Elliott  
Digby**



**Ms J Hayward  
Dunston and Nocton**



**Miss Hoddinott  
School Business Manager and  
Nocton**

# APPLYING FOR SECONDARY SCHOOL

---

JUST A REMINDER THAT IF YOUR CHILD IS IN YEAR 6, AND YOU HAVEN'T ALREADY APPLIED, THE MAIN DEADLINE FOR SECONDARY TRANSFER APPLICATIONS IS 31<sup>ST</sup> OCTOBER.

YOU CAN APPLY ONLINE AT

[HTTPS://WWW.LINCOLNSHIRE.GOV.UK/SCHOOL-ADMISSIONS/APPLY-SCHOOL/](https://www.lincolnshire.gov.uk/school-admissions/apply-school/)

OR

PHONE 01522 782030 AND MAKE AN APPLICATION OVER THE PHONE.

SCHOOL ADMISSIONS TEAM

---

The deadline for secondary  
school place applications  
is 31 October



 GOV.UK

# BEST START TO LIFE – SUPPORT FOR PARENTS

The early years team across North Kesteven have asked us to share with parents some key information that may be useful to families.

Coming in February, April and July/ August!!! We will be delivering some specific sessions to support families and children on school readiness. These will be called ready steady go to school and be delivered by an early years specialist teacher and an early years practitioner, both highly qualified early years staff. There will also be virtual sessions running for families to access. Please look out for the poster with dates that we will be sending over to you to share with families.

Alongside this we also have the below services available for all families to access:

[homepage | best start in life](#)

This government website provides advice and support for families from pregnancy to childcare right through to starting school and support for child development so has a wealth of important information for families to access. This is where they need to go to find out how much early years entitlement funding they can access but also will support them in understanding what they can do to support their child's learning at home.

[Start for life – Lincolnshire county council](#)

This website link will take you to the Lincolnshire start for life offer to provide information for families on what is available to support childcare and child development within Lincolnshire.

# BEST START TO LIFE – SUPPORT FOR PARENTS

Lincolnshire's 47 children's centres are core to our start for life offer. The centres offer free stay-and-play drop-in sessions and universal programmes for all families from antenatal to age five. Further support is also available for children and young people up to 19 years (25 SEND). We would encourage families to visit their local children's centre to find out more. Any adult who is caring for a child can access a range of services at the centre. Use our directory to find your nearest children's centre.

## Find a children's centre – Lincolnshire county council

<p>All children's centres offer:</p>	<p>Each centre offers additional services and activities according to the needs of the community.</p>
<p>Child and family health and maternity services advice and information for families resources to borrow childcare and early education advice and support specific sessions for children with additional needs specific sessions supporting speech and language activities holiday sessions aimed at 0-5 aged children and siblings up to 8 years old. Baby massage sessions sensory sessions support for parents on a range of issues evidence-based parenting support training and employment advice</p>	<p>We also have an enhanced offer delivered at our 10 family hubs which may also include:</p> <ul style="list-style-type: none"><li>speech and language drop-in support</li><li>lending library resources</li><li>SEND drop-in support</li><li>midwifery appointments</li><li>smoking cessation support</li><li>registering your birth</li><li>citizen's advice 1:1 sessions</li><li>sensory rooms and lending libraries</li></ul>

---

# ATTENDANCE

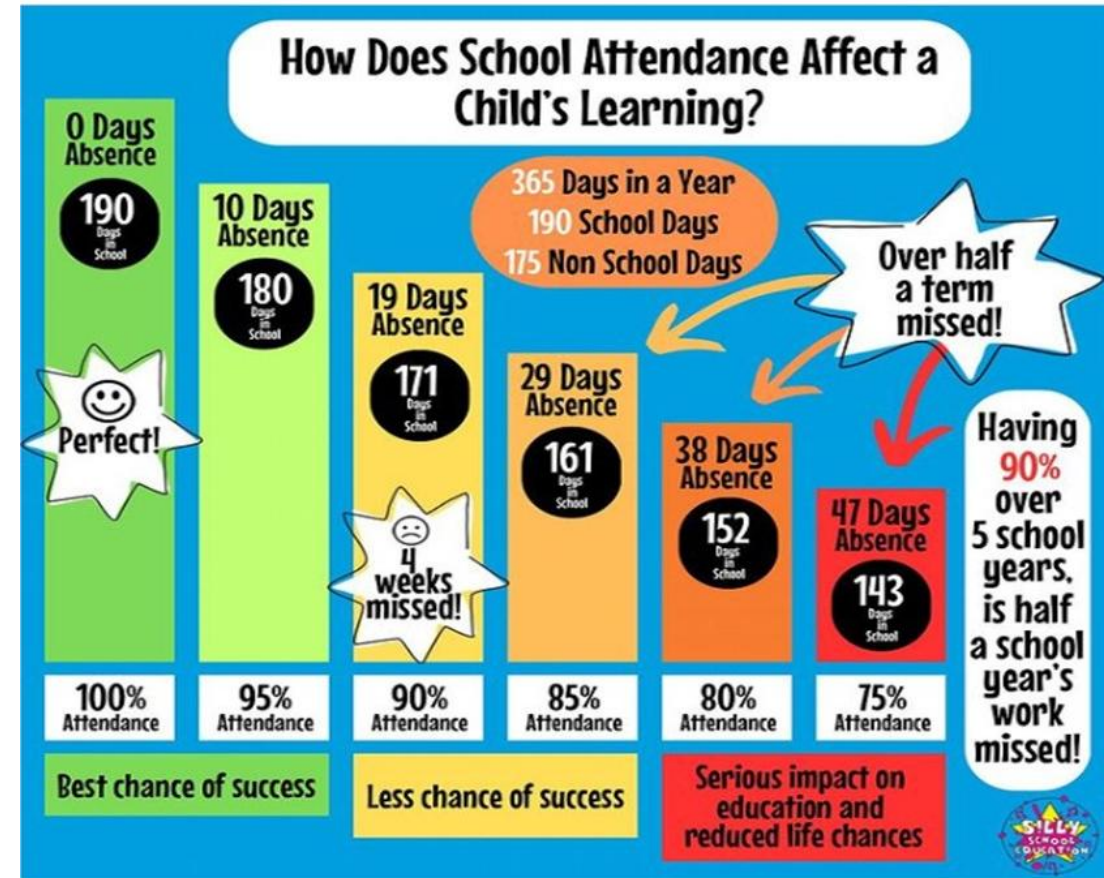
PIXIES – 97.0%

GNOMES – 98.3%

IMPS – 99.0%

WHOLE SCHOOL – 97.6%

---





OPENING DOORS OPENING MINDS

# OPEN DAY

## DIGBY CE PRIMARY

**GRADED OUTSTANDING**  
BY OFSTED IN ALL AREAS

Our school also accepts mid year applications!

- ✓ Brand new Forest School
- ✓ Outstanding Quality of Education
- ✓ Outstanding EYFS
- ✓ Wrap Around Care 7.30 am - 6pm
- ✓ Free LCC transport from Local Villages

CONTACT SCHOOL TODAY TO BOOK AN APPOINTMENT



 [admin@spiresfederation.co.uk](mailto:admin@spiresfederation.co.uk)

 [www.spiresfederation.co.uk](http://www.spiresfederation.co.uk)

 01526 320630



Dates

**THURSDAY 16<sup>TH</sup> OCTOBER AND  
6<sup>TH</sup> NOVEMBER 9.30 AM - 5.00 PM**



Location:  
**Church St, Digby, Lincoln, LN4 3LZ**



---

An open book with a pencil resting on it, set against a blurred background. The book is open, showing many pages. The pencil is resting on the top edge of the right page. The background is out of focus, showing some warm colors like orange and yellow.

**"Today is the first page  
of a new book. Make it a  
good story!"**

Popai Po

---

DIGBY C E PRIMARY SCHOOL  
WE ARE PROUD TO BE  
**OUTSTANDING** IN ALL AREAS



"There is a strong sense of belonging.  
Everyone is welcome and valued here."

"Pupils achieve highly and have  
strong knowledge across all subjects."

"It is a small school, but it  
does not have small horizons." Ofsted July 2025

Telephone 01526 320630

[www.spirefederation.co.uk](http://www.spirefederation.co.uk)



**HAVE A WONDERFUL HALF TERM!**  
**THANK YOU**